

Mater Bar Table, 60x60 cm

Coffee shell or wood waste mixed
with post-consumer e-waste

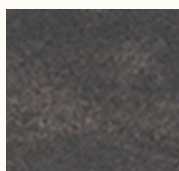
The tabletop of the Mater Bar Table is made of Matek™. Innovative technology allows us to recycle fibre-based waste materials with recycled plastic waste. The table has a simple, clean design making it suitable for various settings. A slim cylindrical metal base ensures the table's stability and offers free placement of chairs.



Wood Waste Grey



Coffee Waste Light



Coffee Waste Black



Designed by
Mater

Item no.
11997 Matek™ Tabletop,
– Coffee Waste Black*
11998 Matek™ Tabletop,
– Coffee Waste Light*
11999 Matek™ Tabletop,
– Wood Waste Grey*
11990 Table base
– H 105 cm

**Variation possible due to
recycled materials*

Country of origin
Latvia

Materials

Coffee shell waste from BKI's coffee roasting process or wood waste mixed with post-consumer e-waste.

Base

20% recycled steel, gunmetal finish

Test

EN 15372:2016

Surface resistance:
Category 2, Möbelfakta: 2023
DS/EN 12720 + A1:2023
SS 83 91 22: 2017

Dimensions

W 60 cm D 60 cm H 106,6 cm
/ W 23.6" D 23.6" H 42"

Weight

24,4 kg / 53.6 lbs

Packaging 2 boxes / 2 pcs.

Maintenance

Please follow our material
cleaning and care guide [here](#)

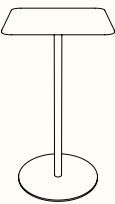
Environment

Indoor

mater

Mater Sustainability Factsheet

Mater Bar Table
60x60



Made of
Matek™ and partly recycled steel

Item no. 11997 / 11990
Coffee Waste Black

CO₂ Footprint
122 kg CO₂e

= 5670g
of waste materials

Item no. 11998 / 11990
Coffee Waste Light

CO₂ Footprint
122 kg CO₂e

= 5320g
of waste materials

Item no. 11999 / 11990
Wood Waste Grey

CO₂ Footprint
121 kg CO₂e

= 5730g
of waste materials

*calculated using Målbar Software v. 2.9608 05-07-2024

Mater Sustainability Factsheet

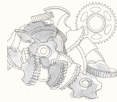
Matek™



Matek®

In alliance with large corporations, Mater explores new technology that recycles industrial fibre and plastic waste. This results in five new unique patented materials under the name Matek®.

Read more about Matek [here](#)



Steel

Our Steel is composed of 20% recycled steel. Steel is a strong and light material with the quality that it can be processed in unlimited ways.



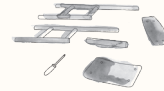
CO₂ Footprint

At Mater, we believe in the importance of transparency. By doing Life Cycle Assessments (LCA) on our furniture, we can analyse the total climate emission for each of our product's lifespan.

Mater Take-Back

We unhesitatingly offer to take all our furniture made from Matek® back at the end of its life to recycle it into new furniture.

Read more about how Mater Take-Back works [here](#)



Repair for long lasting

Good products, are made to be used. To give the products the longest possible life, we want to make it easy for you to repair them yourself.

Contact our customer service for more info [here](#)



Green energy

This product is produced in a production facility that is 100% powered by hydropower – a renewable energy resource.

mater